

MP560

MP568

PARTS CATALOG

REVISION 0

3747B001AA MP560 / 100V(JP)
3747B002AA MP560 / 120V(US)
3747B003AA MP560 / 120V(ca)
3747B004AA MP560 / 220V-240(LAM)
3747B004AB MP560 / 220V-240(LAM)
3747B008AA MP560 / 220V-240V(GB)
3747B009AA MP560 / 220V-240V(EUM/EMB)
3747B011AA MP560 / 220V-240V(AU)
3747B012AA MP568 / 220V-240V(ASA)
3747B013AA MP568 / 220V-240V(HK)
3747B014AA MP568 / 220V-240V(CN)
3747B015AA MP568 / 120V(TW)
3747B016AA MP568 / 220V-240V(KR)



AUG. 2009

QY8-31DQ-000

COPYRIGHT © 2009 CANON INC. CANON MP560/MP568 0809 N 0.00-0

Application

This manual has been issued by Canon Inc. for qualified person to learn technical theory, installation, maintenance, and repair of products. This manual covers all localities where the products are sold. For this reason, there may be information in this manual that does not apply to your locality.

Corrections

This manual could include technical inaccuracies or typographical errors due to improvements or changes in the products. When changes occur in applicable products or in the content of this manual, Canon will release technical information as the need arises. In the event of major changes in the contents of this manual over a long or short period. Canon will issue a new editions of this manual. The following paragraph does not apply to any countries where such provisions are inconsistent with local law.

Trademarks

The product names and company names described in this manual are the registered trademarks of the individual companies.

Copyright

This manual is copyrighted with all rights reserved. Under the copyright laws, this manual may not be copied, reproduced or translated into another language, in whole or in part, without the written consent of Canon Inc.

Copyright © 2009 by Canon Inc.

CANON INC.

Inkjet Device Market Support Management Div

451, Tsukagoshi, 3-chome, Saiwai-ku, Kawasaki-shi, Kanagawa 212-8530, Japan

This manual was created under Microsoft® Windows® 2000.

Parts layout pictures were edited using Adobe® Photoshop® 7.0. KEY No. were created using Adobe® Illustrator®10.

HTML files were created using Microsoft® FrontPage® 2000.

ABOUT THIS MANUAL

A. ILLUSTRATION INDEX

For illustration index, the parts layout illustrations in this parts catalog are listed in abbreviated form in order of illustration number to identify the pages they appear on. To find an illustration of a part, see the ILLUSTRATION INDEX.

B. PARTS LAYOUT & PARTS LIST

Parts layout illustration

a) Parts search

Find a part from the parts layout illustration and find its key number from the parts list to identify the part number and name. For screws, nuts, washers, lock washers, pins, spacers, see SCREWS & WASHERS LIST.

Note: If parts have the same or similar shape but different specifications, their key number is assigned to several part numbers and names in the parts list.

b) Parts replacement procedure

To replace parts, the parts layout illustrations have figure numbers according to the disassembly procedure of the product. The parts that require careful work are shown the illustration.

Parts list

a) FIGURE & KEY No.

The FIGURE & KEY No. column corresponds to the key numbers assigned to the parts in the parts layout illustration.

b) PART NUMBER

The PART NUMBER column gives the part numbers corresponding to the key numbers. To order a part, indicate the part number clearly.

Note: Parts marked NPN are not service parts.

c) RANK

The service parts with N in the RANK column are order parts.

d) QTY

The QTY column gives the number of parts in the corresponding components layout illustration.

e) DESCRIPTION

The DESCRIPTION column gives the part names in English.

To order a part, indicate the part name, too.

C. OPTIONS & CONSUMABLES

These are illustrations and a list of units that can be used as optional consumable equipments.

D. SCREWS & WASHERS LIST

This is a list of screws, nuts, washers, lock washers, pins, and spacers.

The QTY column does not give the number of parts used.

E. TOOL LIST

This is a list of tools used for servicing products.

F. NUMERICAL INDEX

All the parts listed in this parts catalog are arranged in order of part number. You can identify part locations and names from the NUMERICAL INDEX.

Contents

A. ILLUSTRATION INDEX

B. PARTS LAYOUT & PARTS LIST

FIGURE 1 PACKING CONTENTS & PRINT HEAD

FIGURE 2 AC ADAPTER

FIGURE 3 EXTERNAL COVERS & SCANNER UNIT

FIGURE 4 DOCUMENT PRESSURE PLATE UNIT

FIGURE 5 OPERATION PANEL UNIT

FIGURE 6 MAIN CASE UNIT & FRONT DOOR UNIT

FIGURE 7 BOTTOM CASE & INK ABSORBER

FIGURE 8 LOGIC BOARD ASS'Y & PE SENSOR BOARD ASS'Y

FIGURE 9 SHEET FEED UNIT

FIGURE 10 CARRIAGE UNIT & PRESSURE ROLLER UNIT

FIGURE 11 PLATEN UNIT & SPUR UNIT

FIGURE 12 PURGE DRIVE SYSTEM UNIT & SWITCH SYSTEM UNIT

C. OPTION & CONSUMABLES

D. SCREW & WASHER LIST

E. TOOL

F. NUMERICAL INDEX

A. ILLUSTRATION INDEX

Contents

NUMERICAL INDEX

FIGURE 1 PACKING CONTENTS & PRINT HEAD



FIGURE 2 AC ADAPTER



FIGURE 3 EXTERNAL COVERS & SCANNER UNIT



FIGURE 4 DOCUMENT PRESSURE PLATE UNIT



FIGURE 5 OPERATION PANEL UNIT

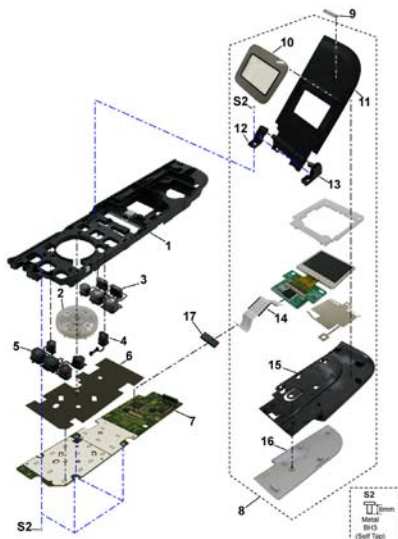


FIGURE 6 MAIN CASE UNIT & FRONT DOOR UNIT

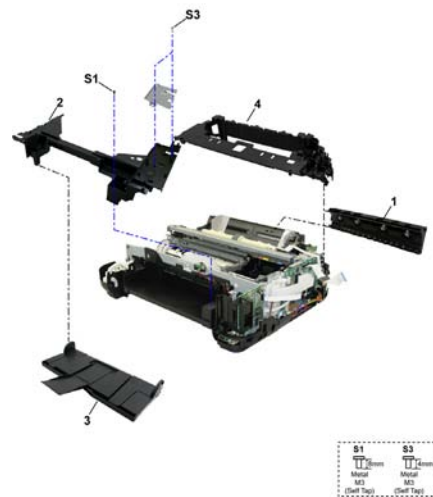


FIGURE 7 BOTTOM CASE & INK ABSORBER

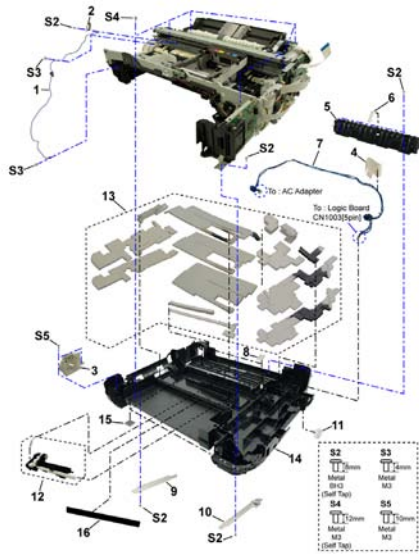


FIGURE 8 LOGIC BOARD ASS'Y & PE SENSOR BOARD ASS'Y

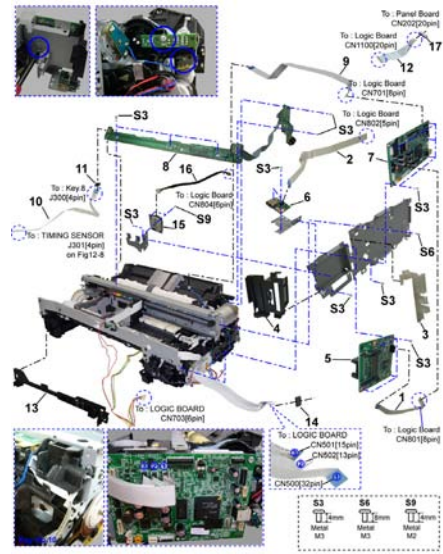


FIGURE 9 SHEET FEED UNIT

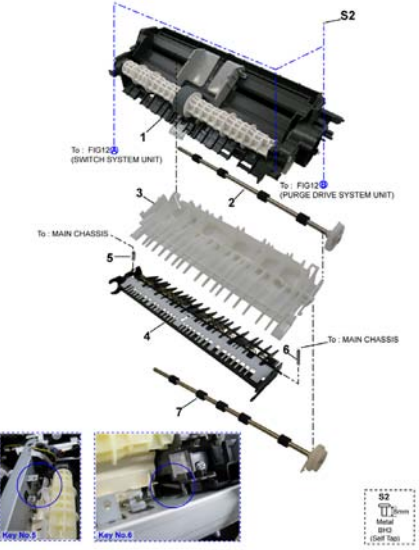


FIGURE 10 CARRIAGE UNIT & PRESSURE ROLLER UNIT

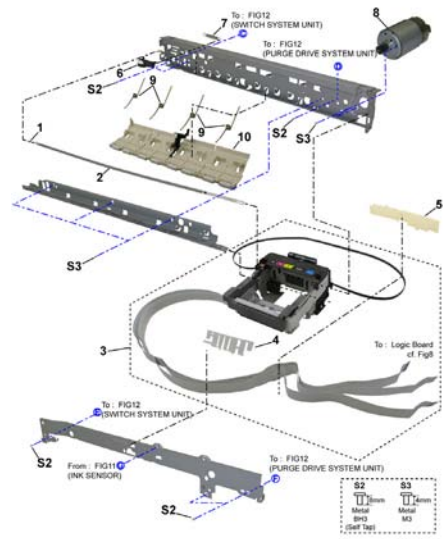


FIGURE 11 PLATEN UNIT & SPUR UNIT

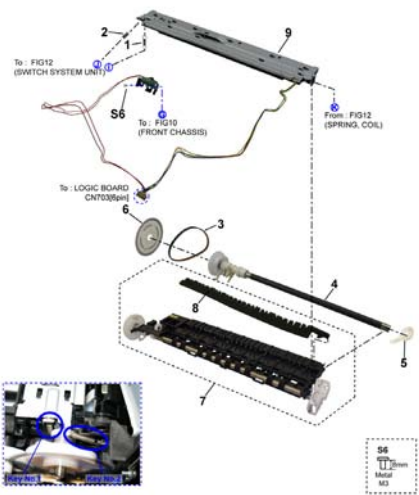


FIGURE 12 PURGE DRIVE SYSTEM UNIT & SWITCH SYSTEM UNIT

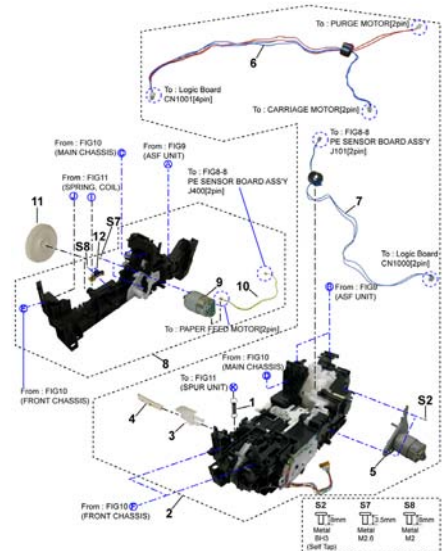


FIGURE 13 OPTION & CONSUMABLES



FIGURE 14 TOOL



B. PARTS LAYOUT & PARTS LIST

Contents

ILLUSTRATION INDEX

NUMERICAL INDEX



FIGURE 1 PACKING CONTENTS & PRINT HEAD



FIGURE & KEY No.		PART NUMBER	RANK	QTY	DESCRIPTION	REMARKS
1-	1	QM3-5518-000		1	CASSETTE UNIT	
	2	QY6-0073-000		1	PRINT HEAD	
	3	QH2-2716-000		1	CORD, POWER	220V-240V(EUM, EMB, ASA, MY)
	3	QH2-2719-000		1	CORD, POWER	100V-120V
	3	QK1-0776-000		1	CORD, POWER	220V-240V(AU)
	3	QK1-2017-000		1	CORD, POWER	100V-120V(TW)
	3	QK1-3048-000		1	CORD, POWER	120V-240V(LAM, CHN)
	3	QK1-3761-000		1	CORD, POWER	100V(JP)
	3	WT3-5156-000		1	CORD, POWER	220V-240V(GB, HK)
	3	WT3-5160-000		1	CORD, POWER	220V-240V(KR)
	4	QC3-2477-000		1	LABEL, PANEL	(CA)
	4	QC3-2478-000		1	LABEL, PANEL	(LAM)

FIGURE 2 AC ADAPTER

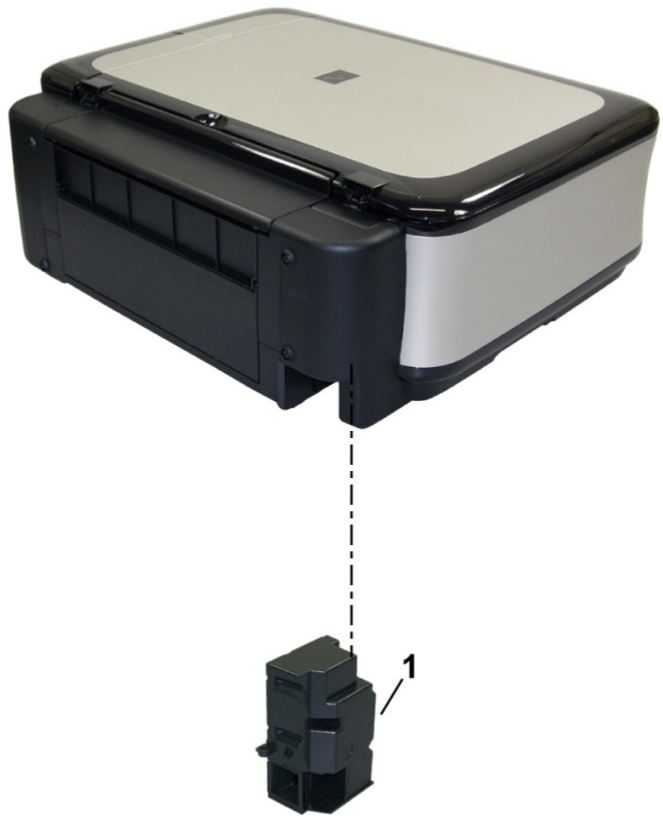


FIGURE & KEY No.		PART NUMBER	RANK	QTY	DESCRIPTION	REMARKS
2-	1	QM3-6264-000		1	AC ADAPTER: 100V-240V 50/60HZ	

FIGURE 3 EXTERNAL COVERS & SCANNER UNIT

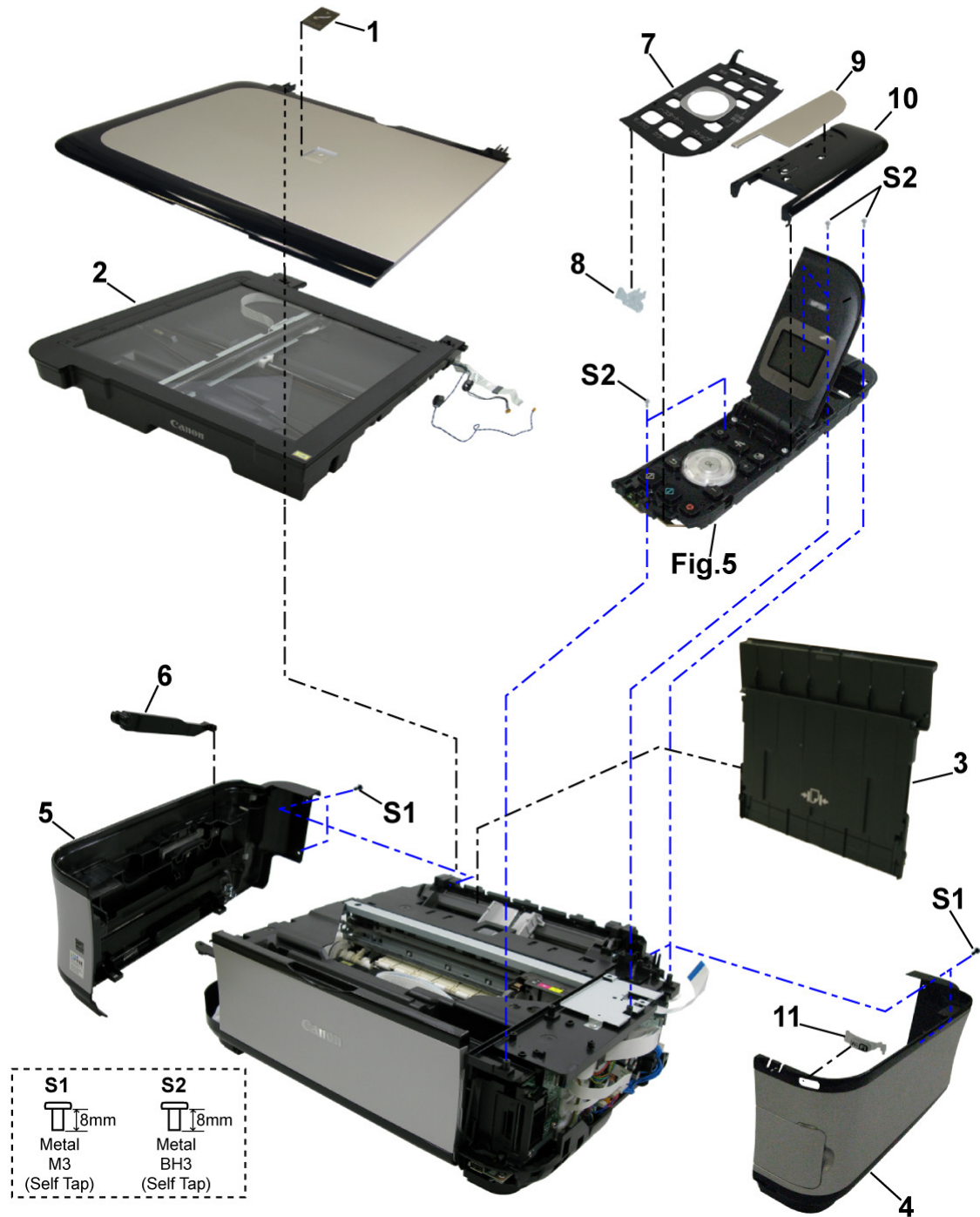


FIGURE & KEY No.		PART NUMBER	RANK	QTY	DESCRIPTION	REMARKS
3-	1	QC1-9023-000		1	EMBLEM	FOR JAPAN
	1	QC1-9024-000		1	EMBLEM	FOR OTHER REGIONS
	2	QM3-5499-000		1	SCANNER UNIT	
	3	QM3-5501-000		1	ASF COVER UNIT	
	4	QM3-5525-000		1	SIDE COVER R UNIT	
	5	QM3-5505-000		1	SIDE COVER L UNIT	
	6	QC3-1007-000		1	STAY, SCANNER	
	7	QC3-0968-000		1	COVER, OPERATION PANEL	(US, CA, LAM, AU, ASA)
	7	QC3-0969-000		1	COVER, OPERATION PANEL	(JP)
	7	QC3-0970-000		1	COVER, OPERATION PANEL	(GB, EUM, EMB)
	7	QC3-0971-000		1	COVER, OPERATION PANEL	(HK, TW)
	7	QC3-0972-000		1	COVER, OPERATION PANEL	(CN)
	7	QC3-0973-000		1	COVER, OPERATION PANEL	(KR)
	8	QC3-1006-000		1	GUIDE, LIGHT	
	9	QC3-0995-000		1	TOP PANEL, OPERATION REAR	
	10	QC3-0994-000		1	TOP COVER, OPERATION REAR	
	11	QC3-1028-000		1	WINDOW, WIRELESS LAN LED	



FIGURE 4 DOCUMENT PRESSURE PLATE UNIT

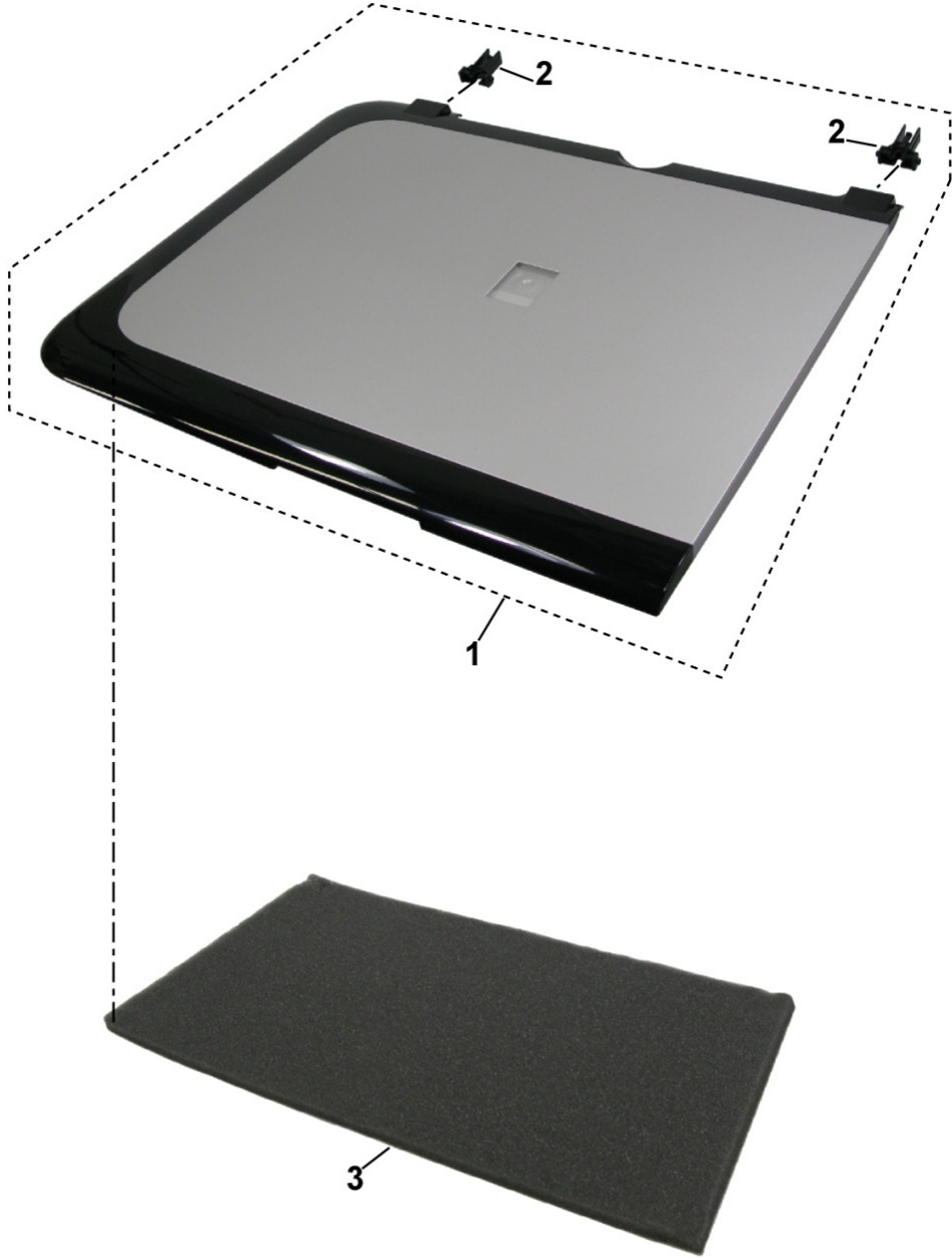


FIGURE & KEY No.		PART NUMBER	RANK	QTY	DESCRIPTION	REMARKS
4-	1	QM3-5498-000		1	DOCUMENT COVER UNIT	
	2	QC3-0955-000		2	HINGE	
	3	QC3-0357-000		1	SHEET, DOCUMENT PRESSURE	

FIGURE 5 OPERATION PANEL UNIT

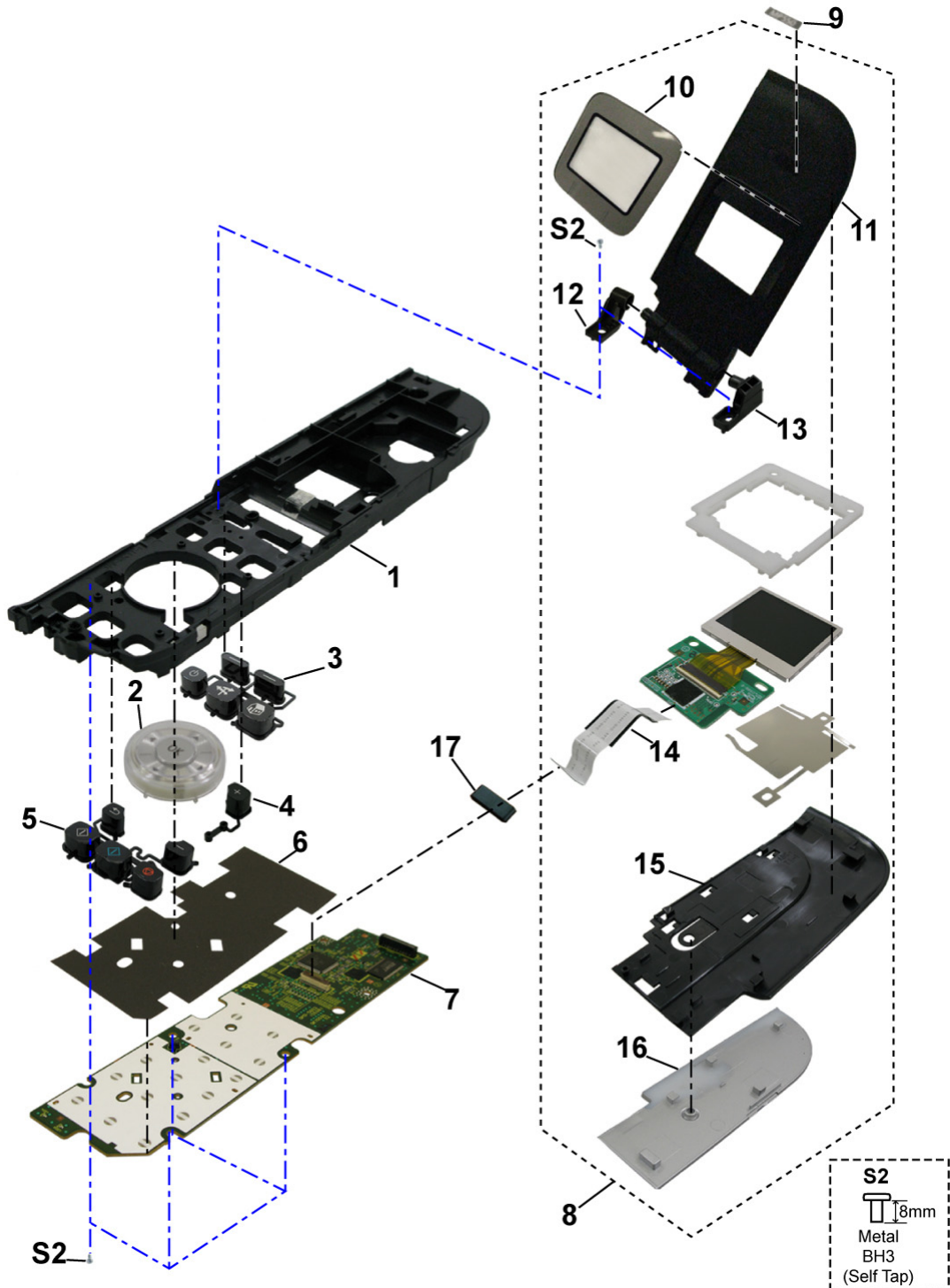
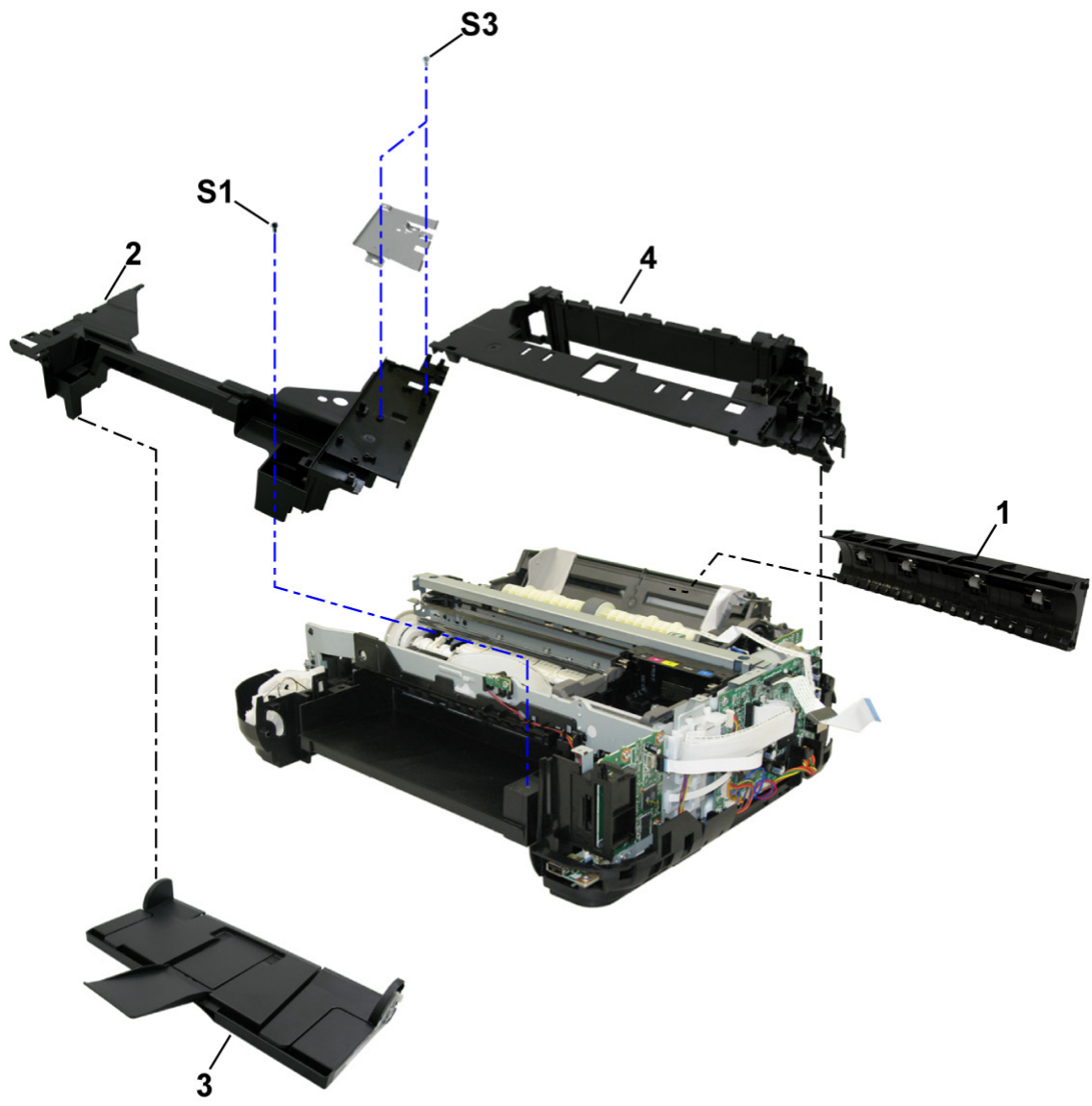


FIGURE & KEY No.		PART NUMBER	RANK	QTY	DESCRIPTION	REMARKS
5-	1	QC3-0977-000		1	MIDDLE FRAME, OPERATION	
	2	QM3-6805-000		1	JOG WHEEL UNIT	
	3	QC3-0980-000		1	KEY, POWER	
	4	QC3-0979-000		1	KEY, PLUS	
	5	QC3-0978-000		1	KEY, START	
	6	QC3-0986-000		1	SHEET, PANEL BOARD	
	7	QM3-5536-000		1	PANEL BOARD ASS'Y	
	8	QM3-5529-000		1	LCD UNIT	
	9	QC3-1032-000		1	LABEL, PRODUCT NAME	MP560
	9	QC3-1033-000		1	LABEL, PRODUCT NAME	MP568
	10	QC3-1031-000		1	WINDOW, LCD	
	11	QC3-0998-000		1	COVER, LCD FRONT	
	12	QC2-7886-000		1	HINGE, LCD L	
	13	QC3-0991-000		1	HINGE, LCD R	
	14	QL2-3051-000		1	LCD CABLE ASS'Y	
	15	QC3-0999-000		1	COVER, LCD TOP	
	16	QC3-1000-000		1	PANEL, LCD TOP	
	17	WE8-6620-000		1	CORE, RING	

FIGURE 6 MAIN CASE UNIT & FRONT DOOR UNIT





S1  8mm Metal M3 (Self Tap)	S3  4mm Metal M3 (Self Tap)
----------------------------------------------------------------------------------------------------------------------------------------	----------------------------------------------------------------------------------------------------------------------------------------

FIGURE & KEY No.		PART NUMBER	RANK	QTY	DESCRIPTION	REMARKS
6-	1	QM3-4762-000		1	REAR GUIDE UNIT	
	2	QC3-0948-000		1	CASE, MAIN	
	3	QM3-5504-000		1	FRONT DOOR UNIT	
	4	QM3-5519-000		1	SUB CASE UNIT	

FIGURE 7 BOTTOM CASE & INK ABSORBER

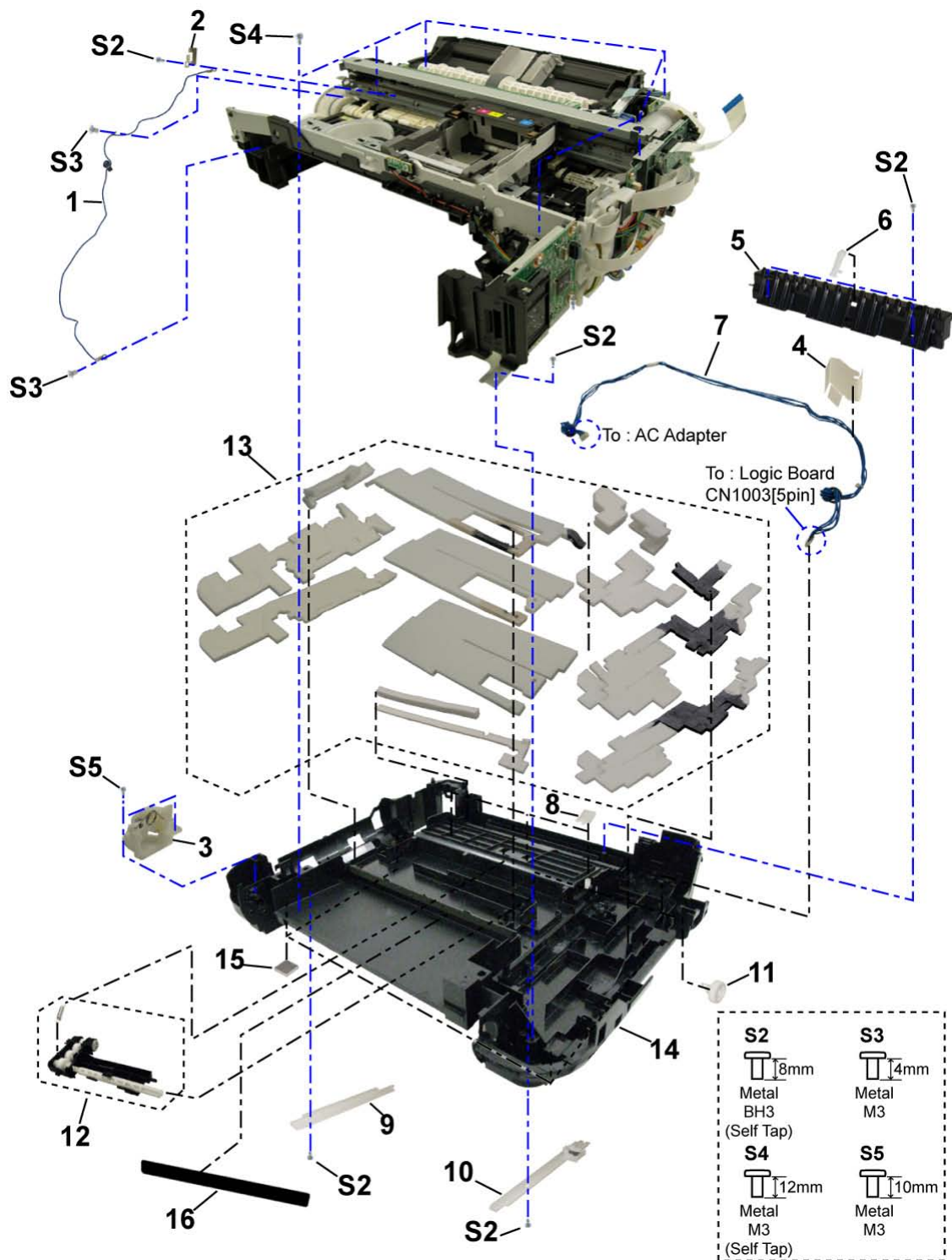


FIGURE & KEY No.		PART NUMBER	RANK	QTY	DESCRIPTION	REMARKS
7-	1	QM3-6106-000		1	GND HARNESS ASS'Y	
	2	QC2-9216-000		1	SPRING, LEAF	
	3	QM3-3739-000		1	FRONT DOOR LINK UNIT	
	4	QC2-9282-000		1	COVER, DC HARNESS ASS'Y	
	5	QC2-7534-000		1	PAPER SEPARATION SLOPE	
	6	QC2-7533-000		1	PAPER SEPARATION KNURL	
	7	QM3-6104-000		1	DC HARNESS ASS'Y	
	8	QC2-7716-000		3	FLAPPER, DUPLEX PAPER FEED	
	9	QC2-7529-000		1	CASSETTE RAIL L	
	10	QM3-3640-000		1	CASSETTE RAIL R UNIT	
	11	QC2-7654-000		1	GEAR, PICK UP SHAFT	
	12	QM3-6794-000		1	PICK UP ARM UNIT	
	13	QY5-0279-000		1	ABSORBER KIT	
	14	QC3-1020-000		1	CASE, BOTTOM	EXCEPT CN, KR
	15	QC1-6457-000		8	FOOT, RUBBER	
	16	QC2-9287-000		1	SHEET, ANTISTATIC	

FIGURE 8 LOGIC BOARD ASS'Y & PE SENSOR BOARD ASS'Y

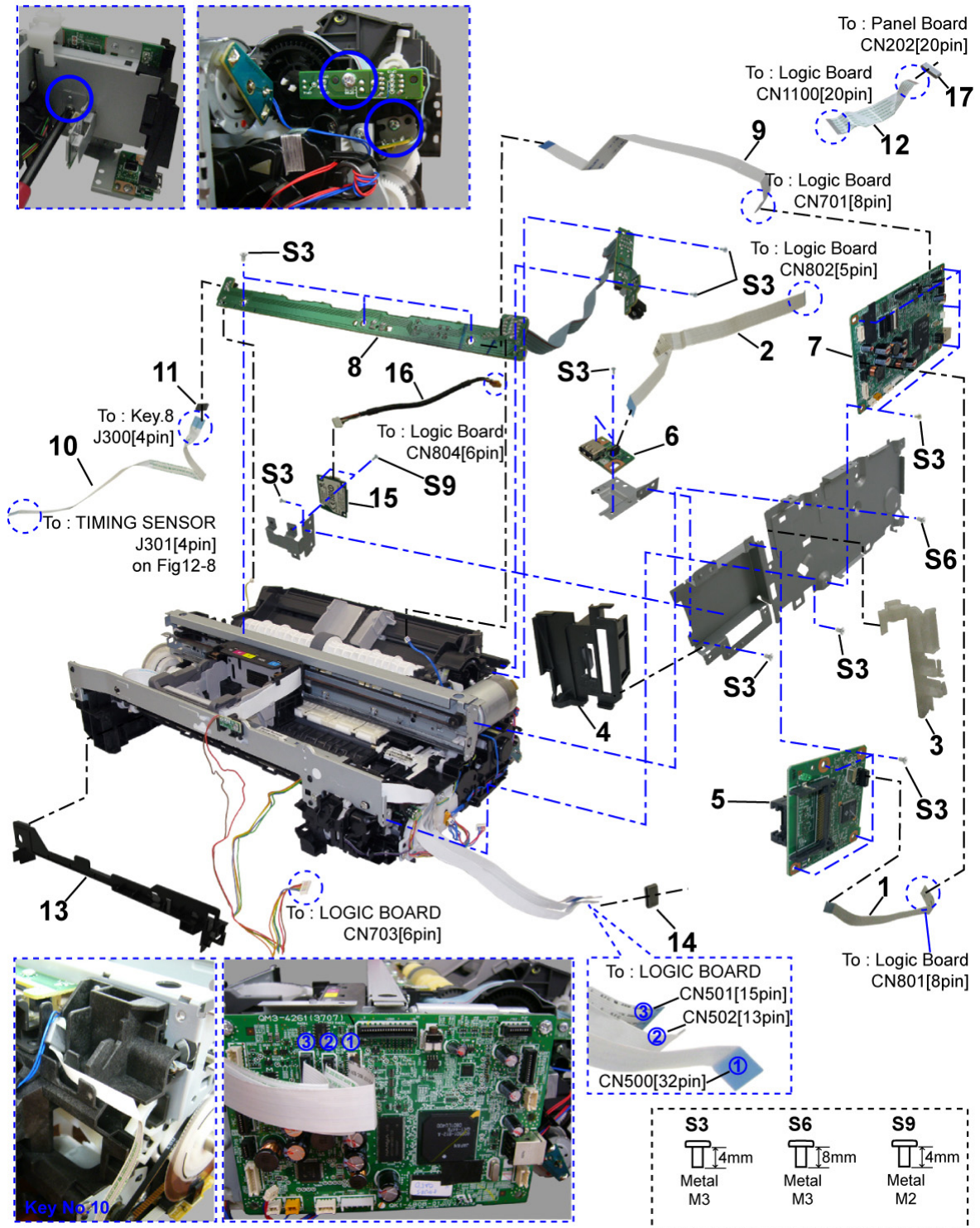


FIGURE & KEY No.		PART NUMBER	RANK	QTY	DESCRIPTION	REMARKS
8-	1	QK1-5600-000		1	CABLE, CARD SLOT	
	2	QK1-5002-000		1	CABLE, PICTBRIDGE	
	3	QC3-1024-000		1	HOLDER, CORE	
	4	QC3-0950-000		1	PANEL, CARD	
	5	QM3-5535-000		1	CARD BOARD ASS'Y	
	6	QC3-0963-000		1	PICTBRIDGE BOARD UNIT	
	7	QM3-5526-000		1	LOGIC BOARD ASS'Y	
	8	QM3-3801-000		1	PE SENSOR BOARD ASS'Y	
	9	QK1-5616-000		1	CABLE, PE SENSOR	
	10	QK1-5034-000		1	CABLE, LF ENCODER	
	11	WE8-6616-000		1	CORE, RING	
	12	QK1-4815-000		1	CABLE, PANEL	
	13	QC3-2485-000		1	FRONT COVER, MIDDLE	
	14	WE8-6618-000		1	CORE, RING	
	15	QK1-5699-000		1	WIRELESS LAN BOARD ASS'Y	
	16	QK1-5701-000		1	WIRELESS LAN HARNESS ASS'Y	
	17	WE8-6620-000		1	CORE, RING	

FIGURE 9 SHEET FEED UNIT

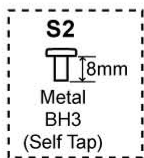
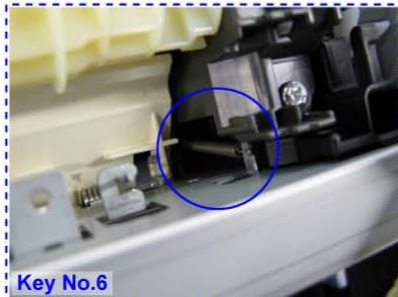
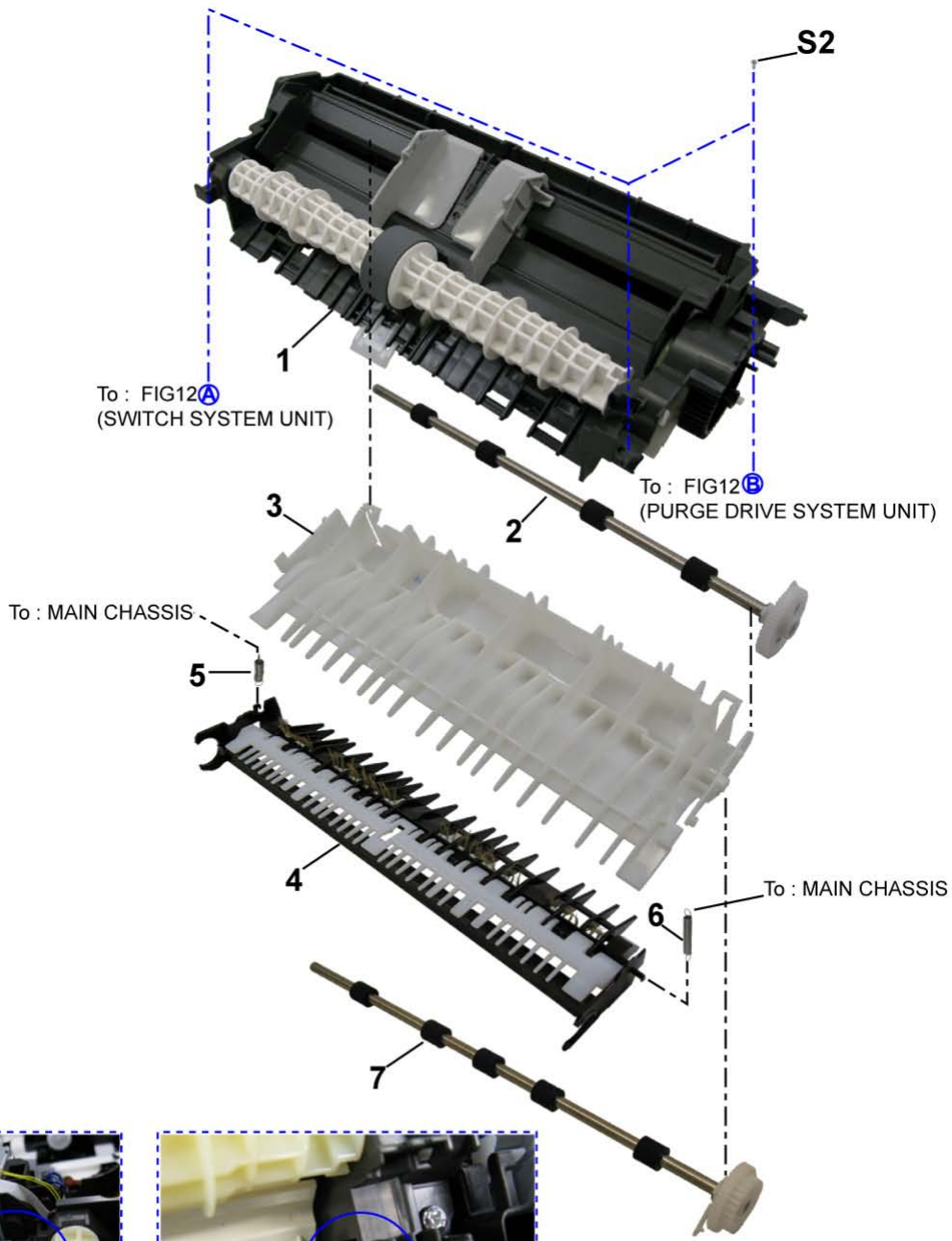


FIGURE & KEY No.		PART NUMBER	RANK	QTY	DESCRIPTION	REMARKS
9-	1	QM3-5495-000		1	ASF UNIT	
	2	QL2-2533-000		1	CASSETTE FEED ROLLER UNIT	
	3	QC2-7699-000		1	GUIDE, CASSETTE FEED	
	4	QM3-6814-000		1	PAPER GUIDE UNIT	
	5	QC2-7657-000		1	SPRING, COIL	
	6	QC2-7743-000		1	SPRING, COIL	
	7	QL2-2535-000		1	DUPLEX PAPER FEED ROLLER UNIT	

FIGURE 10 CARRIAGE UNIT & PRESSURE ROLLER UNIT

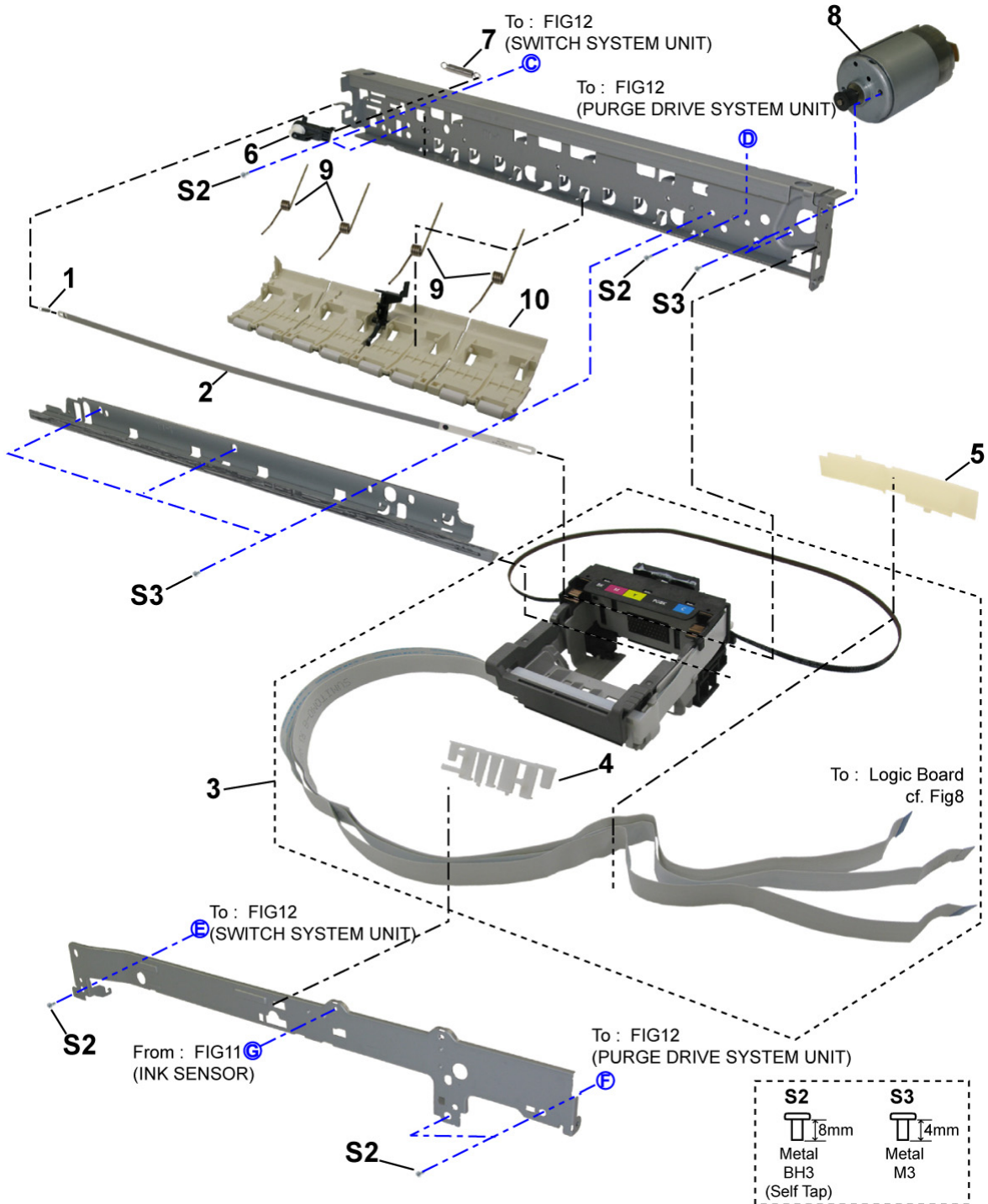


FIGURE & KEY No.		PART NUMBER	RANK	QTY	DESCRIPTION	REMARKS
10-	1	QC2-7549-000		1	SPRING, COIL	
	2	QC3-3927-000		1	FILM, TIMING SLIT STRIP	
	3	QM3-5537-000		1	CARRIAGE UNIT	
	4	QC2-7739-000		1	HOLDER, CARRIAGE CABLE	
	5	QC2-9235-000		1	COVER, CARRIAGE CABLE	
	6	QL2-2534-000		1	PULLEY HOLDER UNIT	
	7	QC1-6202-000		1	SPRING, COIL	
	8	QK1-1500-000		1	MOTOR, CARRIAGE	
	9	QC2-7528-000		4	SPRING, TORSION	
	10	QM3-6801-000		1	PRESSURE ROLLER ASS'Y	

FIGURE 11 PLATEN UNIT & SPUR UNIT

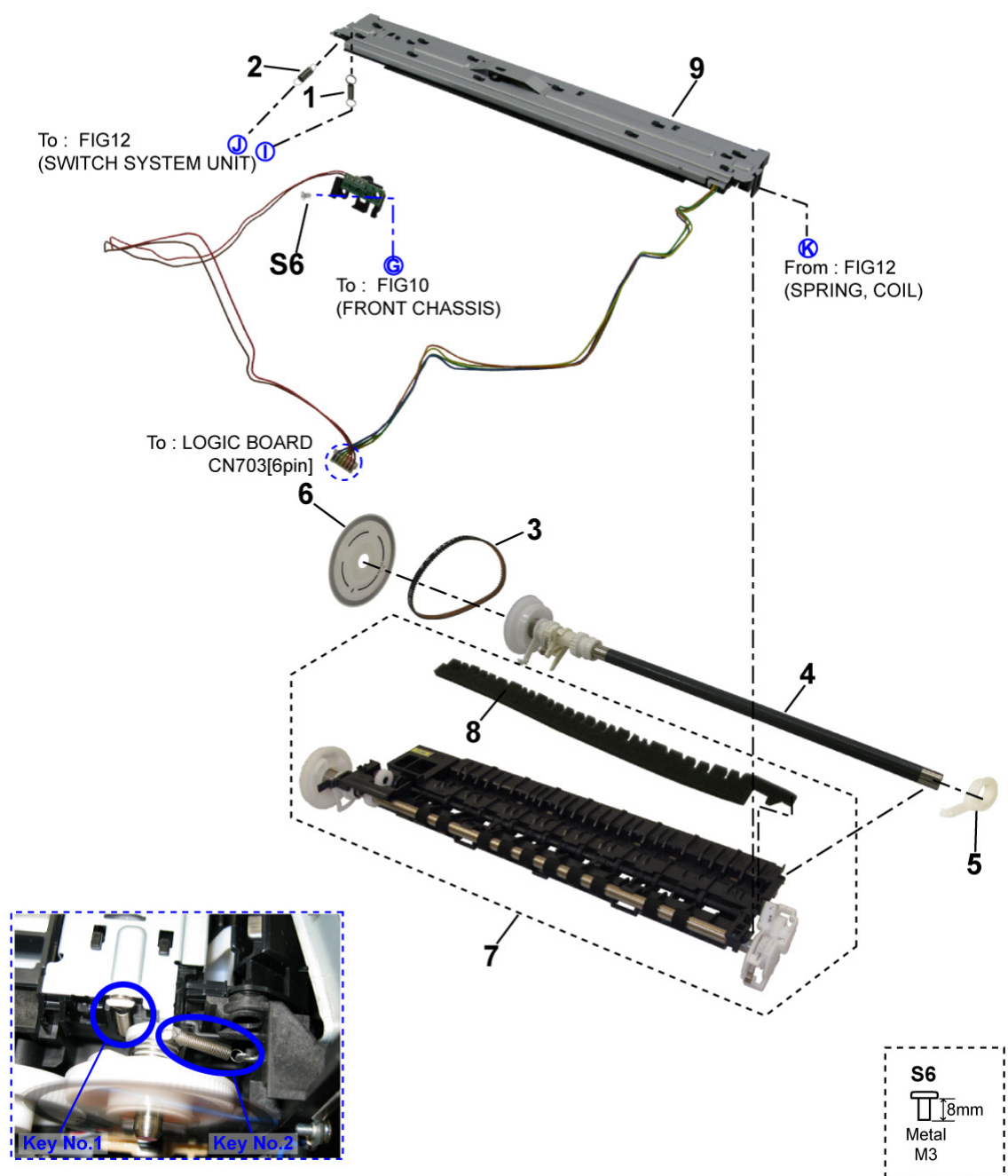


FIGURE & KEY No.		PART NUMBER	RANK	QTY	DESCRIPTION	REMARKS
11-	1	QC2-7745-000		1	SPRING, COIL	
	2	QC2-7782-000		1	SPRING, COIL	
	3	QC2-7526-000		1	BELT, PAPER FEED	
	4	QL2-3052-000		1	LF ROLLER ASS'Y	
	5	QC2-7667-000		1	BUSHING, PAPER FEED ROLLER	
	6	QC3-3925-000		1	FILM, TIMING SLIT DISK FEED	
	7	QM3-6313-000		1	PLATEN UNIT	
	8	QC3-2430-000		1	ABSORBER, INK	
	9	QM3-5521-000		1	SPUR UNIT	

FIGURE 12 PURGE DRIVE SYSTEM UNIT & SWITCH SYSTEM UNIT

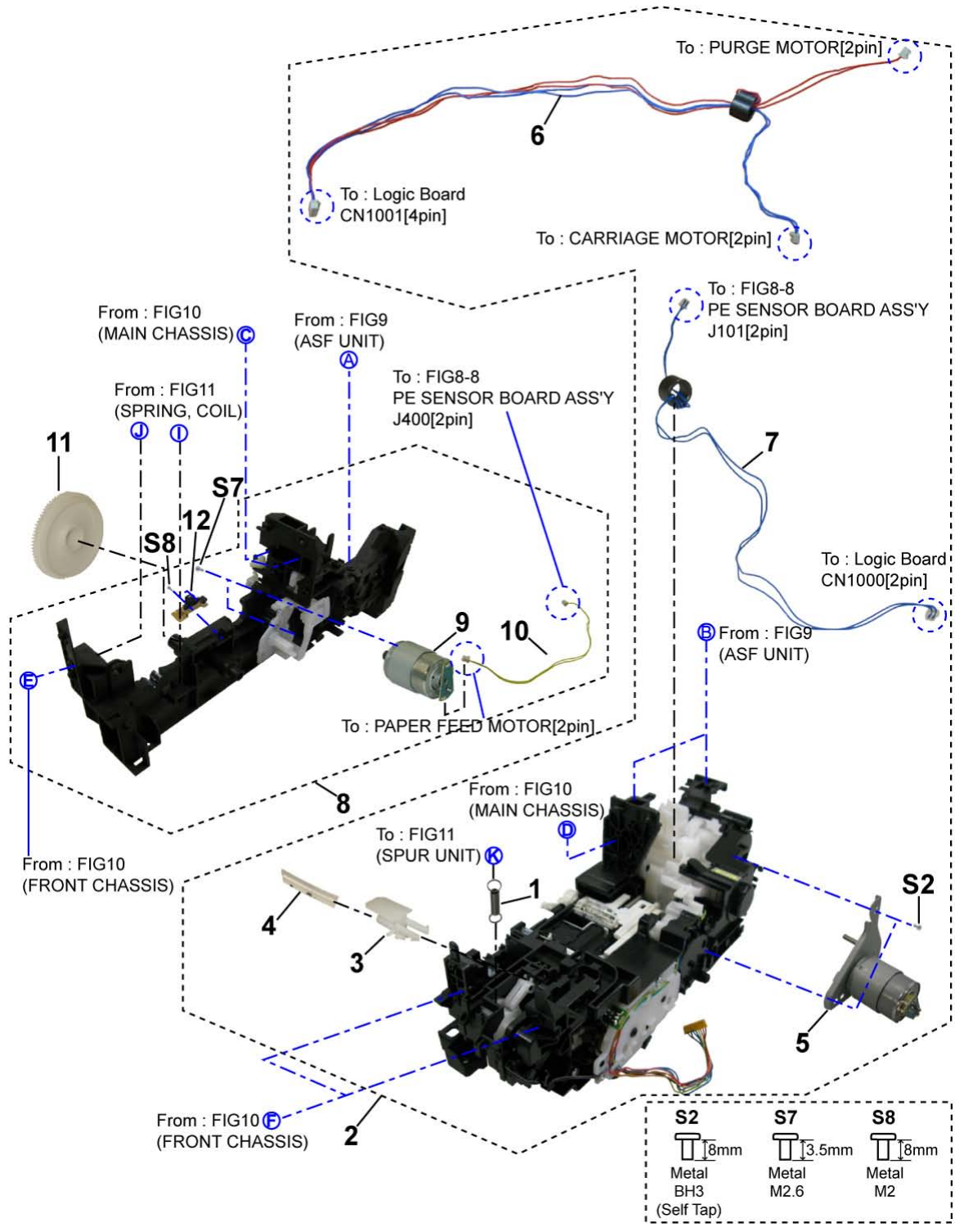


FIGURE & KEY No.		PART NUMBER	RANK	QTY	DESCRIPTION	REMARKS
12-	1	QC2-7787-000		1	SPRING, COIL	
	2	QM3-5540-000		1	PURGE DRIVE SYSTEM UNIT	
	3	QC2-9212-000		1	TUBE, INK JOINT	
	4	QC2-7483-000		1	TUBE, INK	
	5	QM3-6793-000		1	PURGE MOTOR UNIT	
	6	QM3-6110-000		1	MOTOR MULTI HARNESS ASS'Y	
	7	QM3-6108-000		1	PAPER FEED RELAY HANESS ASS'Y	
	8	QM3-5534-000		1	SWITCH SYSTEM UNIT	
	9	QK1-3849-000		1	MOTOR, PAPER FEED	
	10	QM3-4410-000		1	PAPER FEED MOTOR HARNESS ASS'Y	
	11	QC2-7682-000		1	GEAR, IDLER	
	12	QM3-3800-000		1	TIMING SENSOR UNIT	

C. OPTION & CONSUMABLES



Contents

ILLUSTRATION INDEX

NUMERICAL INDEX

FIGURE 13 OPTION & CONSUMABLES



FIGURE & KEY No.		PART NUMBER	RANK	QTY	DESCRIPTION	REMARKS
13-	1	NPN		1	BLACK INK TANK CLI-221BK	CONSUMABLES
		NPN		1	MAGENTA INK TANK CLI-221M	CONSUMABLES
		NPN		1	CYAN INK TANK CLI-221C	CONSUMABLES
		NPN		1	BLACK INK TANK PGI-220BK	CONSUMABLES
		NPN		1	YELLOW INK TANK CLI-221Y	CONSUMABLES
	2	NPN		1	BLACK INK TANK CLI-821BK	CONSUMABLES
		NPN		1	MAGENTA INK TANK CLI-821M	CONSUMABLES
		NPN		1	CYAN INK TANK CLI-821C	CONSUMABLES
		NPN		1	BLACK INK TANK PGI-820BK	CONSUMABLES
		NPN		1	YELLOW INK TANK CLI-821Y	CONSUMABLES
	3	NPN		1	BLACK INK TANK CLI-521BK	CONSUMABLES
		NPN		1	MAGENTA INK TANK CLI-521M	CONSUMABLES
		NPN		1	CYAN INK TANK CLI-521C	CONSUMABLES
		NPN		1	BLACK INK TANK PGI-520BK	CONSUMABLES
		NPN		1	YELLOW INK TANK CLI-521Y	CONSUMABLES
	4	NPN		1	BLACK INK TANK BCI-321BK	CONSUMABLES
		NPN		1	MAGENTA INK TANK BCI-321M	CONSUMABLES
		NPN		1	CYAN INK TANK BCI-321C	CONSUMABLES
		NPN		1	BLACK INK TANK BCI-320PGBK	CONSUMABLES
		NPN		1	YELLOW INK TANK BCI-321Y	CONSUMABLES

D. SCREW & WASHER LIST

[Contents](#)[NUMERICAL INDEX](#)

FIGURE & KEY No.		PART NUMBER	RANK	QTY	DESCRIPTION	REMARKS
S-	1	XB4-7300-809			SCREW, TAP, BINDING HEAD, M3X8	
	2	XB4-7300-805			SCREW, TP, BH3X8	
	3	XB1-2300-405			SCREW, MACH.BH, M3X4	
	4	XA9-1752-000			SCREW, TAP, WASHER HEAD, M3X12	
	5	XA9-1915-000			SCREW, SPRING W WASHER M3X10	
	6	XB1-2300-805			SCREW, M3X8	
	7	XA9-1783-000			SCREW, BINDING HEAD M2.6X3.5	
	8	XB4-7200-805			SCREW, M2X8	
	9	XB1-2200-405			SCREW, M2X4	

This page intentionally left blank

FIGURE 14 TOOL



FIGURE & KEY No.		PART NUMBER	RANK	QTY	DESCRIPTION	REMARKS
T-	1	QY9-0057-000		1	LUBE, FLOIL KG107A, OIL	

F. NUMERICAL INDEX

Contents

ILLUSTRATION INDEX

PART NUMBER	FIGURE & KEY No.		DESCRIPTION	PART NUMBER	FIGURE & KEY No.		DESCRIPTION
QC1-6202-000	10-	7	SPRING, COIL	QC3-1006-000	3-	8	GUIDE, LIGHT
QC1-6457-000	7-	15	FOOT, RUBBER	QC3-1007-000	3-	6	STAY, SCANNER
QC1-9023-000	3-	1	EMBLEM	QC3-1020-000	7-	14	CASE, BOTTOM
QC1-9024-000	3-	1	EMBLEM	QC3-1024-000	8-	3	HOLDER, CORE
QC2-7483-000	12-	4	TUBE, INK	QC3-1028-000	3-	11	WINDOW, WIRELESS LAN LED
QC2-7526-000	11-	3	BELT, PAPER FEED	QC3-1031-000	5-	10	WINDOW, LCD
QC2-7528-000	10-	9	SPRING, TORSION	QC3-1032-000	5-	9	LABEL, PRODUCT NAME
QC2-7529-000	7-	9	CASSETTE RAIL L	QC3-1033-000	5-	9	LABEL, PRODUCT NAME
QC2-7533-000	7-	6	PAPER SEPARATION KNURL	QC3-2430-000	11-	8	ABSORBER, INK
QC2-7534-000	7-	5	PAPER SEPARATION SLOPE	QC3-2477-000	1-	4	LABEL, PANEL
QC2-7549-000	10-	1	SPRING, COIL	QC3-2478-000	1-	4	LABEL, PANEL
QC2-7654-000	7-	11	GEAR, PICK UP SHAFT	QC3-2485-000	8-	13	FRONT COVER, MIDDLE
QC2-7657-000	9-	5	SPRING, COIL	QC3-3925-000	11-	6	FILM, TIMING SLIT DISK FEED
QC2-7667-000	11-	5	BUSHING, PAPER FEED ROLLER	QC3-3927-000	10-	2	FILM, TIMING SLIT STRIP
QC2-7682-000	12-	11	GEAR, IDLER	QH2-2716-000	1-	3	CORD, POWER
QC2-7699-000	9-	3	GUIDE, CASSETTE FEED	QH2-2719-000	1-	3	CORD, POWER
QC2-7716-000	7-	8	FLAPPER, DUPLEX PAPER FEED	QK1-0776-000	1-	3	CORD, POWER
QC2-7739-000	10-	4	HOLDER, CARRIAGE CABLE	QK1-1500-000	10-	8	MOTOR, CARRIAGE
QC2-7743-000	9-	6	SPRING, COIL	QK1-2017-000	1-	3	CORD, POWER
QC2-7745-000	11-	1	SPRING, COIL	QK1-3048-000	1-	3	CORD, POWER
QC2-7782-000	11-	2	SPRING, COIL	QK1-3761-000	1-	3	CORD, POWER
QC2-7787-000	12-	1	SPRING, COIL	QK1-3849-000	12-	9	MOTOR, PAPER FEED
QC2-7886-000	5-	12	HINGE, LCD L	QK1-4815-000	8-	12	CABLE, PANEL
QC2-9212-000	12-	3	TUBE, INK JOINT	QK1-5002-000	8-	2	CABLE, PICTBRIDGE
QC2-9216-000	7-	2	SPRING, LEAF	QK1-5034-000	8-	10	CABLE, LF ENCODER
QC2-9235-000	10-	5	COVER, CARRIAGE CABLE	QK1-5600-000	8-	1	CABLE, CARD SLOT
QC2-9282-000	7-	4	COVER, DC HARNESS ASS'Y	QK1-5616-000	8-	9	CABLE, PE SENSOR
QC2-9287-000	7-	16	SHEET, ANTISTATIC	QK1-5699-000	8-	15	WIRELESS LAN BOARD ASS'Y
QC3-0357-000	4-	3	SHEET, DOCUMENT PRESSURE	QK1-5701-000	8-	16	WIRELESS LAN HARNESS ASS'Y
QC3-0948-000	6-	2	CASE, MAIN	QL2-2533-000	9-	2	CASSETTE FEED ROLLER UNIT
QC3-0950-000	8-	4	PANEL, CARD	QL2-2534-000	10-	6	PULLEY HOLDER UNIT
QC3-0955-000	4-	2	HINGE	QL2-2535-000	9-	7	DUPLEX PAPER FEED ROLLER UNIT
QC3-0963-000	8-	6	PICTBRIDGE BOARD UNIT	QL2-3051-000	5-	14	LCD CABLE ASS'Y
QC3-0968-000	3-	7	COVER, OPERATION PANEL	QL2-3052-000	11-	4	LF ROLLER ASS'Y
QC3-0969-000	3-	7	COVER, OPERATION PANEL	QM3-3640-000	7-	10	CASSETTE RAIL R UNIT
QC3-0970-000	3-	7	COVER, OPERATION PANEL	QM3-3739-000	7-	3	FRONT DOOR LINK UNIT
QC3-0971-000	3-	7	COVER, OPERATION PANEL	QM3-3800-000	12-	12	TIMING SENSOR UNIT
QC3-0972-000	3-	7	COVER, OPERATION PANEL	QM3-3801-000	8-	8	PE SENSOR BOARD ASS'Y
QC3-0973-000	3-	7	COVER, OPERATION PANEL	QM3-4410-000	12-	10	PAPER FEED MOTOR HARNESS ASS'Y
QC3-0977-000	5-	1	MIDDLE FRAME, OPERATION	QM3-4762-000	6-	1	REAR GUIDE UNIT
QC3-0978-000	5-	5	KEY, START	QM3-5495-000	9-	1	ASF UNIT
QC3-0979-000	5-	4	KEY, PLUS	QM3-5498-000	4-	1	DOCUMENT COVER UNIT
QC3-0980-000	5-	3	KEY, POWER	QM3-5499-000	3-	2	SCANNER UNIT
QC3-0986-000	5-	6	SHEET, PANEL BOARD	QM3-5501-000	3-	3	ASF COVER UNIT
QC3-0991-000	5-	13	HINGE, LCD R	QM3-5504-000	6-	3	FRONT DOOR UNIT
QC3-0994-000	3-	10	TOP COVER, OPERATION REAR	QM3-5505-000	3-	5	SIDE COVER L UNIT
QC3-0995-000	3-	9	TOP PANEL, OPERATION REAR	QM3-5518-000	1-	1	CASSETTE UNIT
QC3-0998-000	5-	11	COVER, LCD FRONT	QM3-5519-000	6-	4	SUB CASE UNIT
QC3-0999-000	5-	15	COVER, LCD TOP	QM3-5521-000	11-	9	SPUR UNIT
QC3-1000-000	5-	16	PANEL, LCD TOP	QM3-5525-000	3-	4	SIDE COVER R UNIT

PART NUMBER	FIGURE & KEY No.		DESCRIPTION
QM3-5526-000	8-	7	LOGIC BOARD ASS'Y
QM3-5529-000	5-	8	LCD UNIT
QM3-5534-000	12-	8	SWITCH SYSTEM UNIT
QM3-5535-000	8-	5	CARD BOARD ASS'Y
QM3-5536-000	5-	7	PANEL BOARD ASS'Y
QM3-5537-000	10-	3	CARRIAGE UNIT
QM3-5540-000	12-	2	PURGE DRIVE SYSTEM UNIT
QM3-6104-000	7-	7	DC HARNESS ASS'Y
QM3-6106-000	7-	1	GND HARNESS ASS'Y
QM3-6108-000	12-	7	PAPER FEED RELAY HANESS ASS'Y
QM3-6110-000	12-	6	MOTOR MULTI HARNESS ASS'Y
QM3-6264-000	2-	1	AC ADAPTER: 100V-240V 50/60HZ
QM3-6313-000	11-	7	PLATEN UNIT
QM3-6793-000	12-	5	PURGE MOTOR UNIT
QM3-6794-000	7-	12	PICK UP ARM UNIT
QM3-6801-000	10-	10	PRESSURE ROLLER ASS'Y
QM3-6805-000	5-	2	JOG WHEEL UNIT
QM3-6814-000	9-	4	PAPER GUIDE UNIT
QY5-0279-000	7-	13	ABSORBER KIT
QY6-0073-000	1-	2	PRINT HEAD
WE8-6616-000	8-	11	CORE, RING
WE8-6618-000	8-	14	CORE, RING
WE8-6620-000	5-	17	CORE, RING
	8-	17	
WT3-5156-000	1-	3	CORD, POWER
WT3-5160-000	1-	3	CORD, POWER
XA9-1752-000	S-	4	SCREW, TAP, WASHER HEAD, M3X12
XA9-1783-000	S-	7	SCREW, BINDING HEAD M2.6X3.5
XA9-1915-000	S-	5	SCREW, SPRING W WASHER M3X10
XB1-2200-405	S-	9	SCREW, M2X4
XB1-2300-405	S-	3	SCREW, MACH.BH, M3X4
XB1-2300-805	S-	6	SCREW, M3X8
XB4-7200-805	S-	8	SCREW, M2X8
XB4-7300-805	S-	2	SCREW, TP, BH3X8
XB4-7300-809	S-	1	SCREW, TAP, BINDING HEAD, M3X8